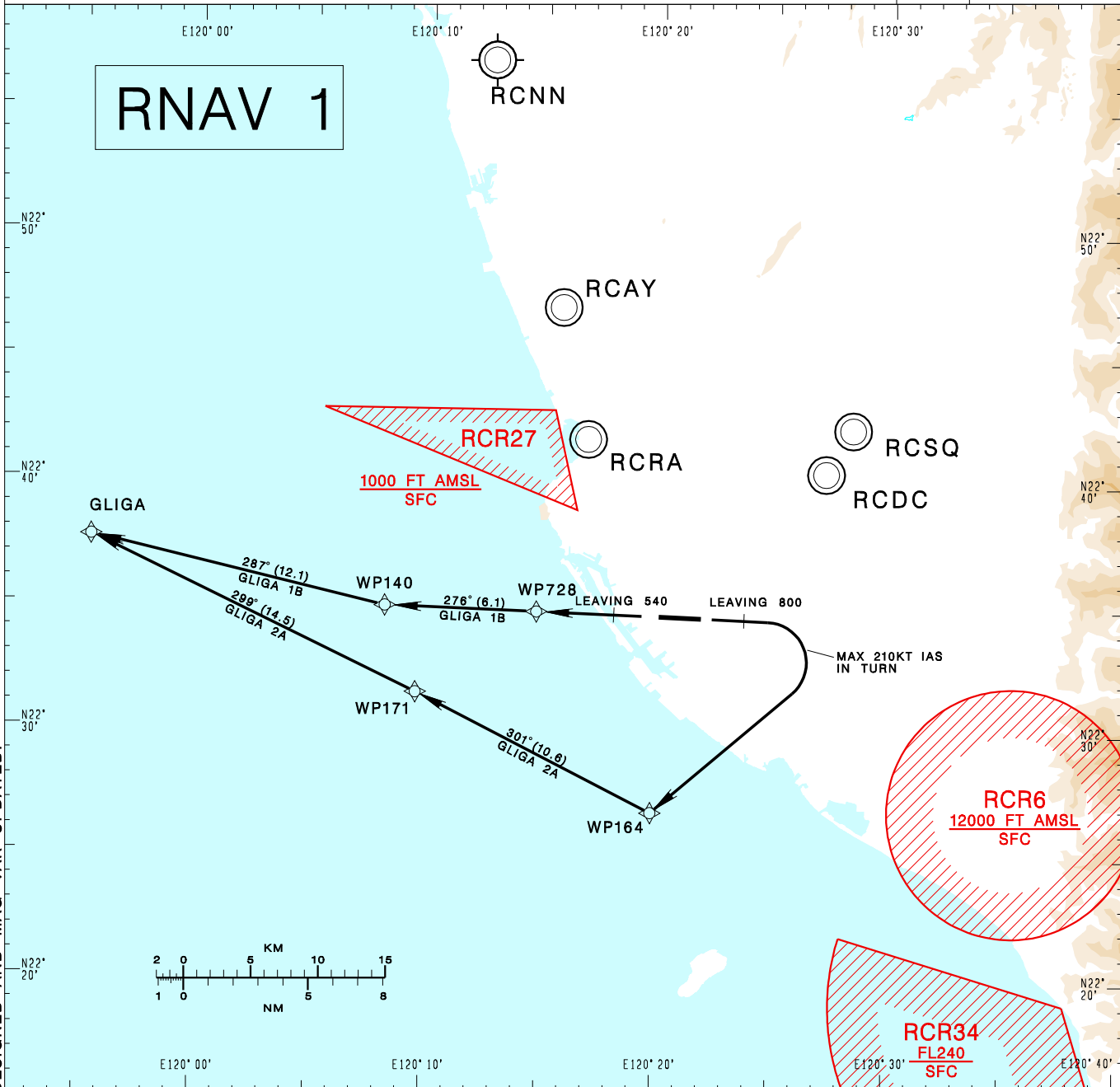


高雄國際機場
KAOHSIUNG INTL AD

RCKH SID
GLIGA 2A RNAV(RWY09)
GLIGA 1B RNAV(RWY27)

KAOHSIUNG APP 124.7 125.7	KAOHSIUNG TWR 118.7 120.7	ATIS 127.8		
Apt Elev: 32'		Trans Level: FL130		Trans Alt: 11,000'
BEARINGS ARE MAGNETIC; DISTANCES ARE NAUTICAL MILES; ELEVATIONS, HEIGHTS IN FEET				



CHANGES: LEG BEFORE WP164 REDESIGNED AND MAG VAR UPDATED.

GLIGA TWO ALFA RNAV DEPARTURE

Climb on RWY HDG until 800ft, then turn right to WP164, then to WP171, GLIGA.
Cross WP164 at or above 4,000ft.
Cross WP171 at or above 8,000ft.

GLIGA ONE BRAVO RNAV DEPARTURE

Climb on RWY HDG until 540ft, then direct to WP728, then to WP140, GLIGA.
Cross WP140 at or below 8,000ft.

NOTE

1. GLIGA 2A:
Minimum climb gradient required: 6.0%(365 ft/NM) until 2,000ft.
Speed restriction of 210KT IAS maximum until established on track to WP164.
2. Caution: pier cranes, terrain and stacks east, west and south of the airport.
3. ATS surveillance required.